

## USER'S MANUAL

### Baby Stroller BC10019

THIS INSTRUCTION BOOKLET CONTAINS **IMPORTANT** SAFETY INFORMATION. PLEASE READ AND KEEP FOR FUTURE REFERENCE.

**Please give us a chance to make it right and do better!**

Contact our friendly customer service department for help first.

Replacements for missing or damaged parts will be shipped ASAP!



# Contact Us!

## Do NOT return this item.

Contact our friendly customer service department for help first.



# Before You Start

Please read all instructions carefully and keep it for future reference.

### General Warnings:

- ⚠ **Danger!** Keep all small parts and packaging materials for this product away from babies and children, otherwise they may pose a choking hazard.
- ⚠ The product must be installed and used under the supervision of an adult.
- ⚠ Read through each step carefully and follow the proper order.
- ⚠ Remove all Packaging, separate and count all parts and hardware before Installation.
- ⚠ Please ensure that all parts are correctly installed, incorrect Installation can lead to a Danger.
- ⚠ We recommend that, where possible, all items are assembled near to the area in which they will be placed in use, to avoid moving the product unnecessarily once assembled.
- ⚠ Ensure a secure surface during construction, and place the product always on a flat, steady and stable surface.

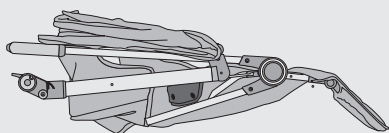
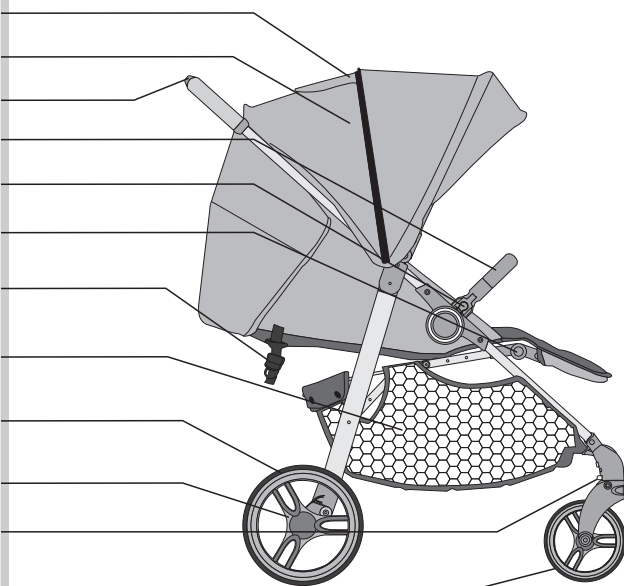
**⚠ WARNING:** ⚠ Never leave child unattended.

**⚠ WARNING:** ⚠ Avoid serious injury from falling or sliding out.  
Always use seat belt.

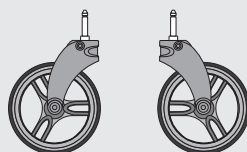
**⚠ WARNING:** ⚠ Parcels or accessory items, or both, placed on the unit may cause the unit to become unstable.

# PARTS

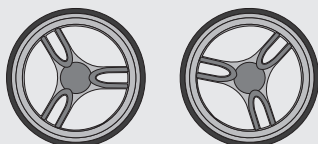
1. Skylight
2. Canopy
3. Folding button
4. Front armrest
5. Front armrest removal button
6. Footrest adjustment button
7. Backrest strap adjustment set
8. Storage basket
9. Rear wheel
10. Rear brake pedal
11. Front wheel directional button
12. Front wheel



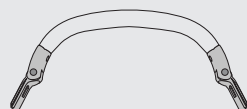
Stroller frame



Front wheel assembly



Rear wheel assembly



Front armrest



# WARNING

Please read this manual carefully before use and keep it for future reference. Failure to follow this instruction may affect the safety of children.

- When children are riding, the caregiver should not leave.
- When children ride, they must use seat belts.
- As long as the stroller is stationary, the brakes must be used.
- Please make sure that all locking devices are locked before using the cart.
- Do not carry other babies or bags in this stroller.
- Use the crotch belt of the seat belt in combination with the waist belt and shoulder strap.
- When not in use, remove the shoulder strap from the belt or belt buckle.
- Keep your children away when unfolding or folding the product.
- When adjusting the stroller, make sure that your child does not touch it to avoid being pinched.
- Do not let your children play with this product.
- This product is suitable for children aged 6-36 months. Do not use it for children over 3 years old or weighing more than 15kg (33 lbs).
- The maximum load-bearing capacity of the basket is 2kg(4.4 lbs).
- When used by children, the front armrest must be used.
- Putting any load on the handlebar will affect the stability of the vehicle.
- The braking device should be activated when the child is placed in the stroller or taken out of the stroller.
- The use of accessories not provided by the manufacturer is prohibited.

---

# CARE AND MAINTENANCE

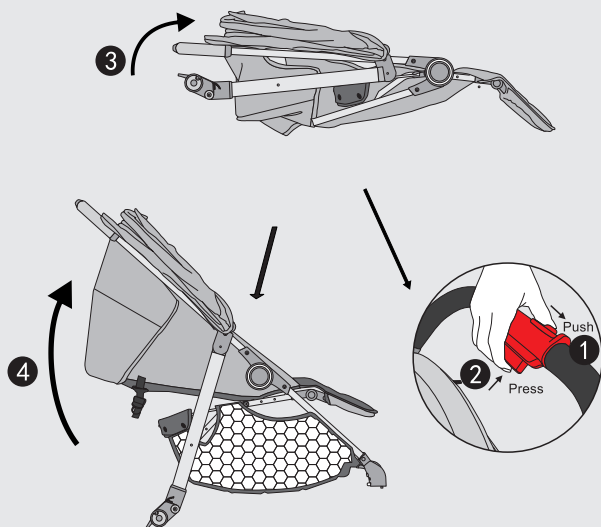
- Please use non-toxic, non-abrasive cleaners to clean your stroller. Mix water and a small amount of mild non-toxic detergent into a solution. Wipe the frame with a damp cloth. Never use abrasive cleaners or solutions.
- If you need to leave the stroller idle for a period of time, do not store it in a humid or high temperature environment, otherwise it will easily lead to rust and aging of the parts. Allow air to circulate around the seat, and do not stack any objects on the seat. So as not to affect the service life of the product or cause danger.
- Regularly check whether there are loose screws, damaged parts or broken sutures. If the part is damaged, please stop using it.
- When disassembling and assembling, please follow the instructions carefully to avoid unnecessary damage.

---

# Use Instructions

---

## The unfolding of the cart



1. Take the product out of the packing box, put the wheels and other parts aside, and adjust the main frame to the state shown in the figure to prepare for installation.

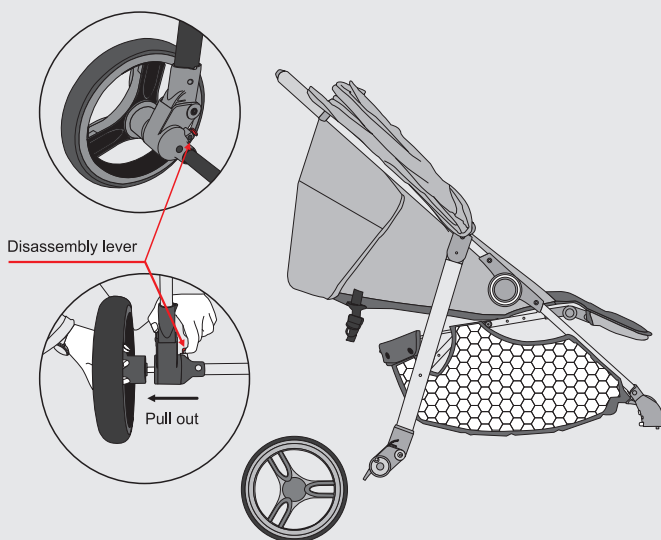
2. Push the second lock button on the handle to the left end (in the push direction)①, while firmly pinching the folding button②, then lift the handlebar of the cart up slightly③, unfold the frame④, and hear a click, indicating that the frame is fully unfolded.

---

# Use Instructions

---

## Installation and removal of the rear wheel



1. Installation of the rear wheel: Just insert the rear wheel bearing into the rear wheel slot of the stroller frame. After hearing a click, the installation is complete.

2. Disassembly of the rear wheel: Locate the rear wheel disassembly lever on the rear wheel slot, pull it upward, and then pull out the rear wheel axle to complete the disassembly of the rear wheel.

---

# Use Instructions

---

## Installation and removal of the front wheel



1. Installation of the front wheel set: Align the shaft of the front wheel set with the hole of the front foot tube seat and insert it until you hear a clear snapping sound, and pull the wheel in the opposite direction to confirm whether the wheel is installed in place. Use the same method to install the other front wheel.

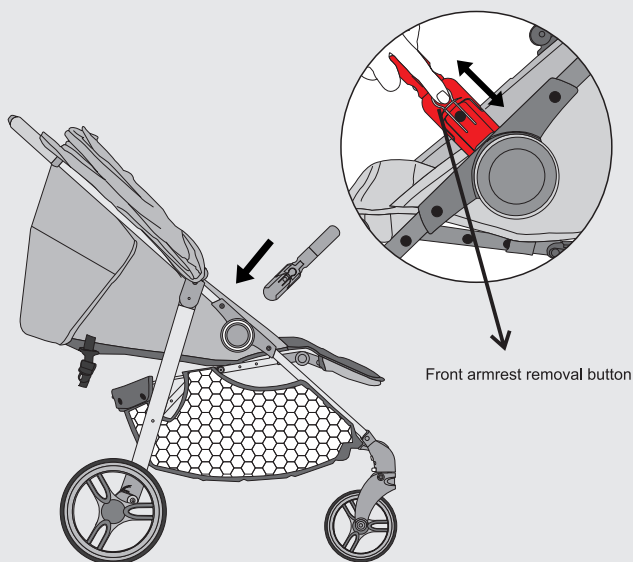
2. Front wheel quick release: Press and hold the front wheel quick release button inside the front wheel seat, and at the same time pull the front wheel out of the front leg tube.

---

# Use Instructions

---

## Front armrest removal and installation



1. Installation of the front armrest: Insert the two ends of the front armrest into the corresponding armrest joints on both sides to complete the installation of the front armrest.

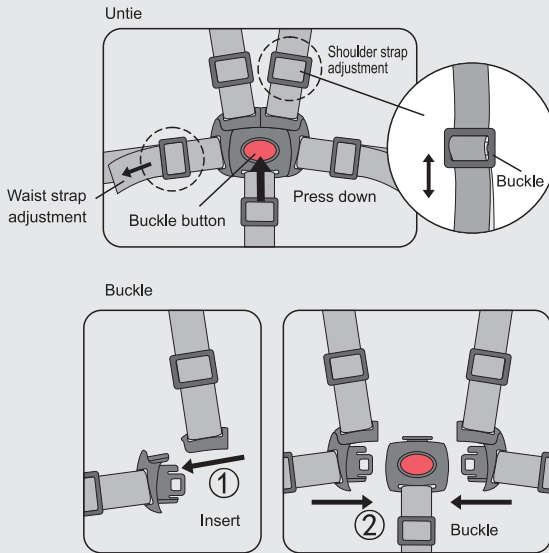
2. Disassembly of the front armrest: Press the disassembly button on both sides of the armrest to pull out the front armrest.

---

# Use Instructions

---

## Use of safety belt



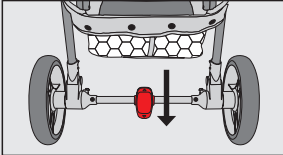
1. Fasten the buckle on the upper side of the seat belt buckle with the insert, and then insert the combined insert into the central female buckle of the seat belt buckle.
2. If you need to unlock the seat belt buckle, you only need to press the insert parts exposed on both sides of the center female buckle of the seat belt to eject it from the center female buckle to open the seat belt buckle.
3. Safety belt adjustment: Pull one end of the safety strap and slide the buckle up and down to adjust the length of the strap.

---

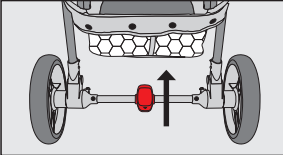
# Use Instructions

---

## How to use the rear brake



Brake



Unbrake



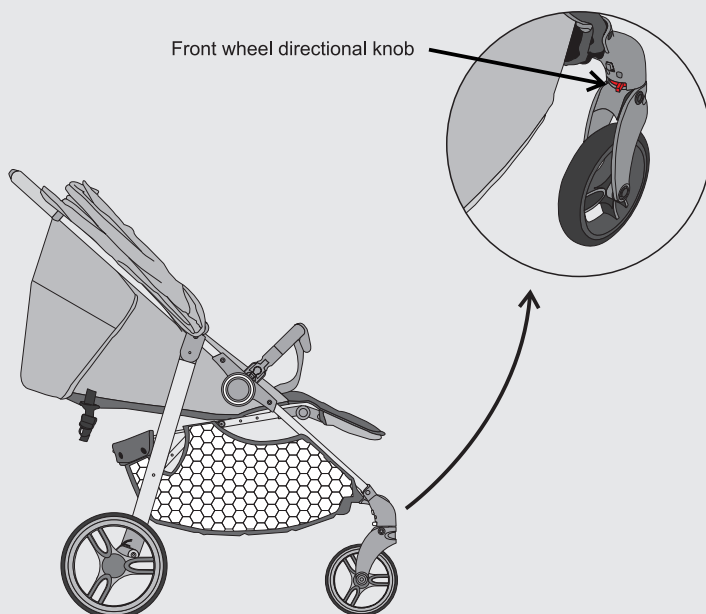
The use of rear wheel brake: step on the rear brake pedal, the rear wheel brakes, the cart cannot be pushed; on the contrary, lift the brake pedal to unlock the rear wheel, and the cart can be pushed.

---

# Use Instructions

---

## How to use the front wheel orientation



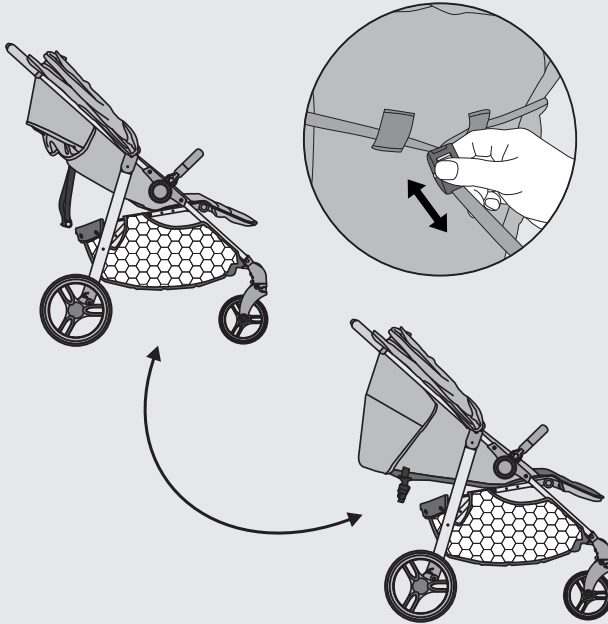
1. Front wheel orientation: Toggle the front wheel orientation knob to the outside of the cart to orient the front wheel, and the cart can go straight.
2. Front wheel universal: Toggle the front wheel orientation knob to the inner side of the cart to release the orientation of the front wheel, and the cart can rotate and turn.

---

## Use Instructions

---

### Seat back adjustment



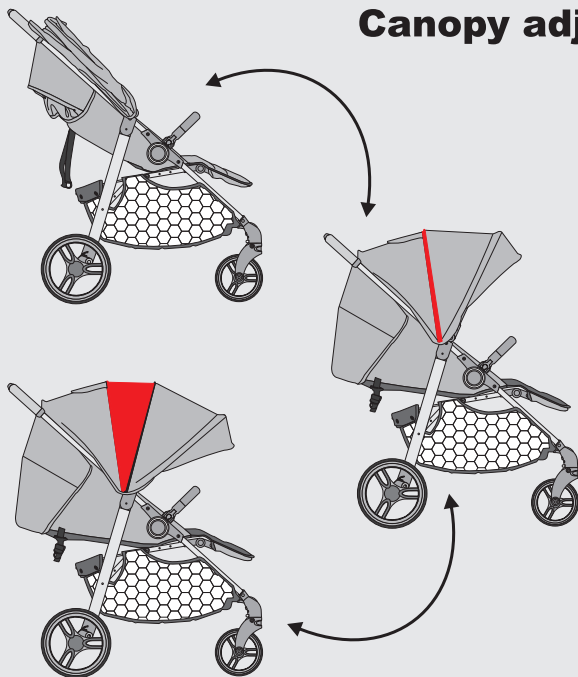
1. Pull the backrest adjustment strap behind the seat backrest, tighten the buckle on the strap, and adjust the seat backrest up until it is upright and the baby can sit upright.
2. On the contrary, pull the strap, press the buckle clips on both sides of the buckle, and pull the buckle downward to loosen it. The backrest can be adjusted down until it is level, and the baby can lie down.

---

## Use Instructions

---

### Canopy adjustment



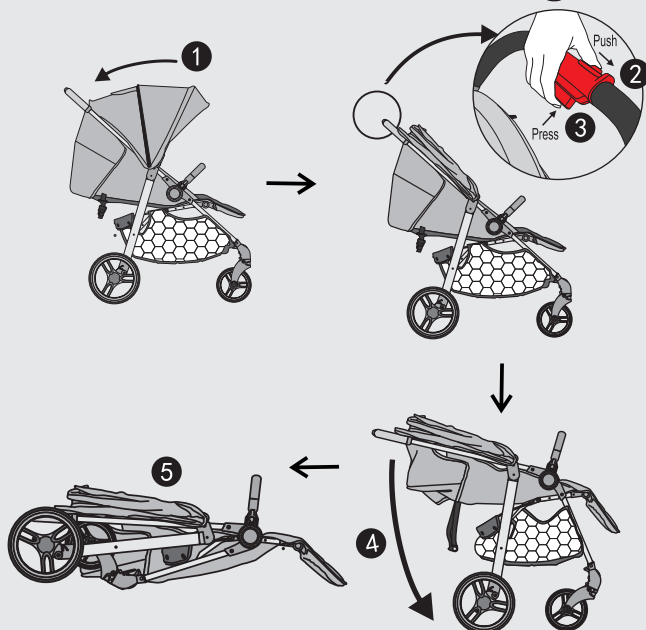
1. When the canopy is fully folded, unfold the canopy in the direction of the arrow.
2. Then unzip the zipper in the middle of the canopy to complete the final unfolding mode.

---

## Use Instructions

---

### The folding of the cart



1. First close the canopy①.

2. Push the second lock button on the handle to the left end (push direction)②, and at the same time, firmly pinch the folding button③ and then press the handlebar④ down. After hearing a click, it indicates that the lock is automatically locked. Folding is completed⑤.